

Life Guard

Safe Handling – Save Blood



**Erythrocyte
Temperature Control**



Features:

Shipping and handling
at room temperature

Process and quality
insurance due to activation
only after sufficient cooling
(approx. 7.5°C) with
inherent functionality
check of indicator:
Activatable equals
operational

Application in warm or
cool environment
activated or
not activated

Unique and explicit
color code:
not activated (light)
activated (dark blue)
critical temperature
exceeded (bright orange)

Easy, contactless, quick
and clear activation
including sterilization effect
due to UV -C light source

Effective thermal insulation
towards false outer temperature
(e.g. hand or warm surface
contact during handling)

Flexible procedures of application
with multiple light equipment for
activation
(single vs. bulk activation, on
bag vs. off bag activation, etc.).
Full automation to be discussed

Life Guard

Safe Handling – Save Blood

Application:

Life Guard indicators are best applied directly after whole blood is processed and prepared for storage in cool environment. Application is also possible in cool environment, both in activated or non activated form.

Activation:

After sufficient cooling, Life Guard indicators can be activated contactless, quickly and clearly by means of a special light source. Indicators offer inherent quality assurance for sufficiently cooled blood (lower than approx. 7.5°C) and 100% proof of functionality when changing the center of the indicator into dark blue.

Temperature monitoring:

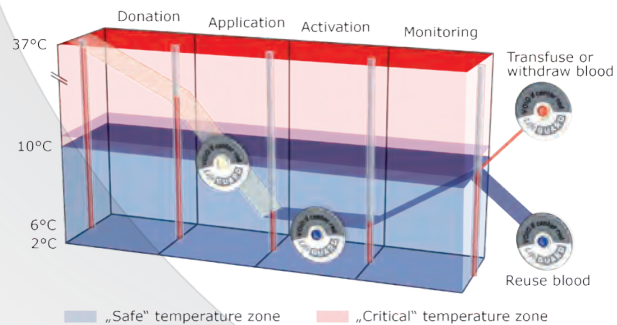
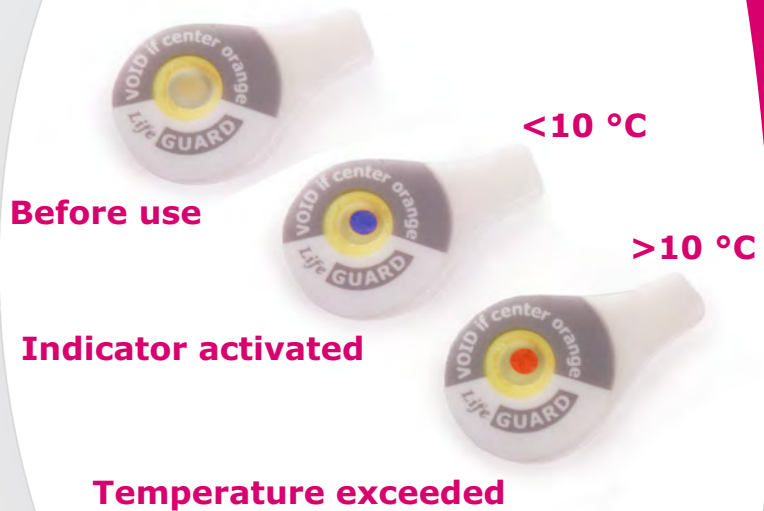
Once activated, Life Guard indicator continuously monitors temperature abuse of Blood bags with direct mass contact to the blood bag surface and effective thermal insulation against false temperature influence from warm sources during blood bag handling.

Temperature abuse:

When blood bag core temperature exceeds the critical threshold temperature of 10°C, the center of Life Guard indicators irreversibly changes color into bright orange to alert user of temperature abuse.

Blood savings:

Blood bags with Life Guard indicators that do not show abuse of critical threshold temperature can be returned into blood bag life cycle for further use.



Stationary activation device
TempMatic

Distributed by
Lmb Technologie GmbH
Möslstr. 17
D-85445 Schwaig
Tel: +49 - 8122 - 880 96 - 0
Fax: +49 - 8122 - 880 96 - 60
www.lmb.de
info@lmb.de